

THE ROYAL CRESCENT SOCIETY
NEWSLETTER

Issue No. 55

Winter 2004

Contents

The Search for An Editor	page 2
Chairman's Notes	page 3
The Crescent Cabbage Patch	page 4
The Julian Road Scheme	page 6
Crescent Lawn Company Ltd	page 7
Bird Control	page 8
Bath Preservation Trust Programme 2005s	page 9

Advertisers

Please support the advertisers in this or any other issue, not forgetting to mention the Newsletter when you do so. We are constantly looking for new advertisers to help defray the production costs, so if you or anyone you know have anything to publicise please let us know.

THE SEARCH FOR AN EDITOR

Following the departure from the Crescent of former editor Stephen Conlin, who has produced our Newsletter three times a year since 2001, the Society's Committee is now looking for an editor for future editions, as announced at the AGM in April. The task involves gathering items from both within the Society and elsewhere for inclusion in the Newsletter, liaising with advertisers, and finalising the layout for submission to the printer.



If you would like to help the Society by undertaking this task, even for a short stint, please inform the Chairman, Stephen Little, who will give any computer or other assistance required.

*Published by The Royal Crescent Society
22 Royal Crescent Bath
email: altcar@nildram.co.uk*

<i>Hon. President:</i>	<i>Michael Daw</i>
<i>Hon. Vice-President</i>	<i>The Rt. Hon. The Earl of Stockton</i>
<i>Chairman:</i>	<i>Stephen Little</i>
<i>Vice-Chairman:</i>	<i>Tim Forester</i>
<i>Treasurer:</i>	<i>Jennifer Bereska</i>
<i>Secretary:</i>	<i>Ian Woodhouse</i>
<i>Editor:</i>	<i>Vacant –it could be you!</i>

CHAIRMAN'S NOTES

The continuing lack of an Editor, and pressure on time, have led to a late and curtailed Winter edition of our Newsletter. Volunteers please! Accompanying this edition are details of our annual Festive Dinner, to be held at the Royal Crescent Hotel a little later than usual on Sunday Jan 9th. Don't forget to indicate whether or not you want the vegetarian menu! If you have any suitable prizes for the raffle in aid of the Railings & Ha-ha Restoration Fund, please give them to one of the committee members listed on page 2.

In the last issue I mentioned the Public Inquiry to consider the B&NES Local Strategic Plan, which is now due to start at Keynsham Town Hall on February 8th and continue for several weeks. Further changes to the original version have been proposed and they can be seen on the B&NES website (www.bathnes.gov.uk) or at the Guildhall and Central Library. Any comments must be received by B&NES at Trimbridge House or to Local_Plan@bathnes.gov.uk before 5pm on 20th January to be taken into account.

Views are also sought on the 'Vision of the West of England (i.e. the former Avon area) in 2026'. The West of England Partnership of four councils – B&NES, Bristol, North Somerset and South Glos – is preparing a 'sub-regional spatial planning strategy' to help shape the future of the area, setting out how it will change and develop, and future housing and business land use and transport improvements. Further information can be found at www.westofengland.org; comments are required by January 14th.

We continue to be promised details of improved parking arrangements in the Crescent 'real soon', but the mills of the B&NES grind exceedingly slowly. If you have finally lost patience, you could consider joining the Bath Car Share Club, which provides its members with access to short term car hire on a 'pay as you drive' basis. See www.bathcarshare.co.uk for further details.

Two recent publications are of interest to the Society:

English Heritage has published an important document about the state of historic buildings with a section devoted to the South West which gives a brief mention to the Crescent. It can be read and downloaded at www.english-heritage.org.uk/heritagecounts. (Click on 'Download the regional summaries').

B&NES has published its "Streetscape Manual" covering 68 pages and is very interesting, including historic notes and policy on paving, kerbs, road surfaces, signage and street furniture clutter - some in direct contradiction of what has been done in Milsom Street! It too can be read and downloaded (only 68 pages!) from www.bathnes.gov.uk by clicking on 'Planning services', 'Urban design' and 'Streetscape Manual'. It has a questionnaire which has had no publicity but requires responses by 24 January 2005. It can also be seen at Public Libraries or bought for £5 at Trimbridge House.

STEPHEN LITTLE (tel: 310180, email altcar@nildram.co.uk)

FROM THE BATH WEEKLY CHRONICLE & HERALD, JUNE 10 1950

'No Cabbages in Royal Crescent, Council Urged'

A minute in the report of the Small Holdings and Allotments Committee on the Royal Crescent Allotments caused Cllr.H.D.Roberts to make some criticism at the City Council meeting on Tuesday. The minute stated that the committee was unable to accede to a lopping of the lime trees in these allotments.

Cllr. Roberts asked the committee to give careful consideration to the removal of the allotments opposite the Royal Crescent. He had the greatest sympathy for the allotment holders when food was so urgently needed during the war, but in the larger interests of the city, which they were endeavouring to make into a tourist centre, he was sure that every effort should be made to find alternative accommodation.

Royal Crescent was visited by thousands of people every year, and, as one of the city's assets, they should endeavour to give it its proper setting. If he might offer a slogan to the committee for the 1951 Festival of Britain, it was "No cabbages in the Crescent please".

Ald. S. J. Amblin said that the demand for allotments was 'colossal'. Ald. A. W. S. Berry said he understood there was a Bill which would give security of tenure for this type of allotment, but he could not contemplate having allotments there for ever.

The Town Clerk (Mr. Jared E. Dixon) said he believed the security of tenure was 12 months, but had not passed into law yet. He would go fully into the matter for the next meeting of the committee.



LIZ COX
BATH - ENGLAND

supporting
the amenities and surroundings
of
The Royal Crescent and Margaret's Buildings

17 Margaret's Buildings,
Bath.
Telephone 445509

A. E. EADES

GREENGROCER AND MARKET GARDENER

*for locally-grown, unsprayed vegetables and a wide
range of organic and exotic produce*



*All sizes of Christmas trees available for delivery now:
Nordman or freshly-cut/ rooted, locally-grown*



Fruit baskets and hampers a speciality

Crescent Lane, Julian Road, Bath.
Telephone (01225) 317319.

THE JULIAN ROAD SCHEME

Join us in encouraging B&NES council to embrace the recommendations of the Overview and Scrutiny Panel report on the Public Realm by moving ahead in 2005 with the design and implementation of the Julian Road Scheme.

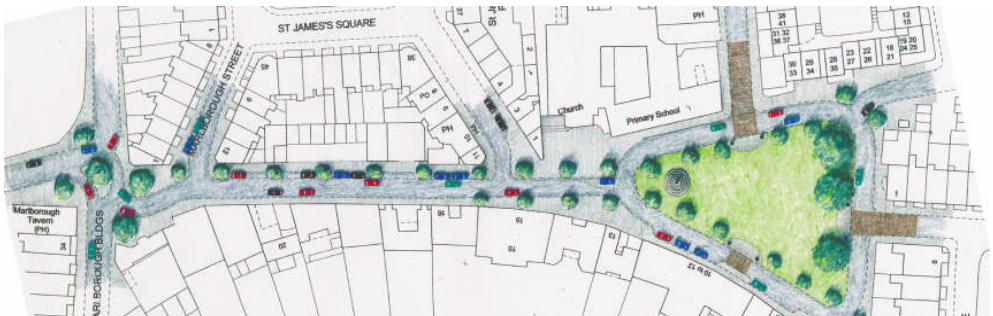
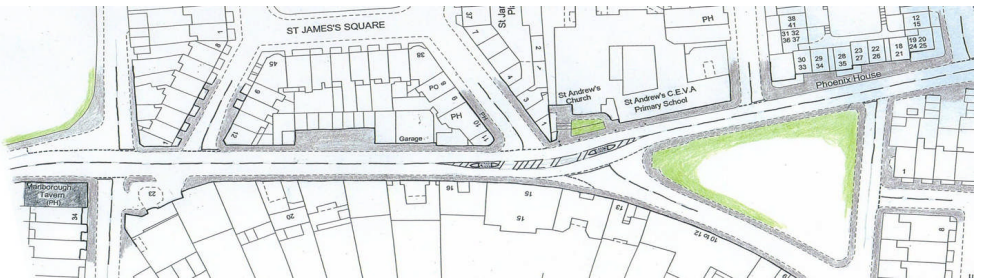
The Julian Road Project Campaign Group has been formed as a focus group working as a sub committee to Parkside Community Safety Action Group. It is currently composed of Sally Jarman (Northumberland St), Ron Plant (River St), Martyn Stanton Harris (St James Park), Sue Dixon (St Andrew's School) and Justin Braithwaite (Marlborough Buildings).

Its purpose is to step up the pressure on B&NES over the implementation of the Julian Road Scheme and to

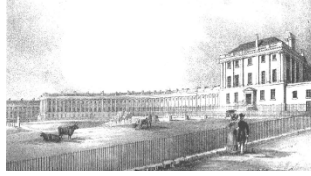
- (a) raise a petition in support of the project
- (b) flush out and then try to answer any concerns that residents may have
- (c) compile a list of design ideas that people would like to see incorporated.

A petition form will be available for signature at the Festive Dinner on January 9th. If you wish to support the project by signing it please do so there or contact the Society who will make it available.

If you have ideas or concerns with respect to the design – before and after are shown below – please contact JRS@tiscali.co.uk .



CRESCENT LAWN COMPANY LTD



I'm delighted to be able to tell you that some progress has been made since I last wrote to you. This has been on the legal side and in the early new year we will be able to sign three important documents. These are the Deed of Variation (to the original Heritage Lottery Fund/B&NES Contract), a Deed of Indemnity (with B&NES regarding our financial contribution and indemnities) and a Licence (again with B&NES, allowing the workmen to go on to the Lawn to carry out the work). There is only one final amendment to the Licence which our Solicitor has in hand, before the big signing ceremony.

English Heritage have promised to provide a list to B&NES of people capable of over-seeing the works and acting as Consultant. It will be his/her job to draw up the Specification and go out to tender for prices. We will be liaising with him/her for the various Applications for Consent with B&NES. It had been hoped that this Consultant would start work in November, but this has not worked out in practice. Watch this space.

Unfortunately our application for Charitable Status has been rejected, but on the other hand we have been given permission to appeal, and this is what the Directors will be doing very shortly, with the hopes for a more favourable outcome.

Sadly Ernest Jowett has had to withdraw from the Board of Directors due mainly to a change in domestic arrangements. Ernest has been of enormous help to the Board and his input has been invaluable since the inception of The Crescent Lawn Company. His wise advice will be greatly missed. Ian Woodhouse has agreed to join the Board and we look forward to having him aboard.

JENNY HARDISTY
Secretary to The Crescent Lawn Company Ltd

BIRD CONTROL PROPOSAL

The last decade has seen a dramatic increase on the population of urban gulls; this is likely to continue. The success with which the gull has adapted to the urban environment has made the bird a nuisance given its size, nesting habits and aggressive nature.

Bath's Georgian architecture with twin apex roofs affords an ideal nesting place which can jeopardise the central drain channels and create significant damage and expense for property owners.

Group participation in a resident association terrace-wide (non-hostile) deterrent is a sensible solution because treating just one or two roofs in a terrace merely shifts the problem to the untreated.

Optimum installation time is now prior to Spring nesting and the cost is £70 per roof or less for a whole terrace and involves installation of preventative wires across the voids.

If interested please ring Carl Broderick on 01225 335752 for more information.

BANKES BOOKS

*wishes the Royal Crescent Society well
and sends Christmas and New Year
greetings*

**5 Margaret's Buildings, Bath.
Telephone (01225) 444580**

BATH PRESERVATION TRUST

PROVISIONAL 2005 PROGRAMME OF EXCURSIONS

Some properties are National Trust and the tour cost will be reduced accordingly for NT members. Full details will be distributed in the New Year.

1. WED 11 MAY 2005 : MAPLEDURHAM HOUSE / BUSCOTT PARK

Departure 8.30am return approx 6.30pm. Mapledurham House & Watermill (private) – (please bring sandwich lunch, tea or coffee will be provided); late 16th century Elizabethan House, watermill fully restored and producing flour and bran. Buscott Park NT (non-members £5) a late 18th century Italianate House and contains the famous Farrington collection of fine paintings including contemporary artists; the garden design is by Harold Peto

2. FRIDAY 24 JUNE 2005 : BOURTON HOUSE GARDEN/ SEZINCOTE

Depart 8.45am return approx 6.30pm. Bourton House Garden (private). The House itself is not open but there are many accessible outdoor architectural features to be enjoyed. Sezincote (private) thought to be the only Moghul building to survive in Western Europe with a long curved orangery to one side. The interior is classical and has been restored by The Kleinworts to its original glorious appearance. (This excursion will include a light lunch at Bourton House).

3. THURSDAY 14 JULY 2005 : COUGHTON COURT / RAGLEY HALL

Depart 8.30am. return approx 7.30pm : Coughton Court (private - free to NT and HHA members) a magnificent house with a tudor gatehouse. Ragley Hall (private) and is one of this country's great Palladian houses with a magnificent interior.

4. WEDNESDAY 14 SEPT 2005 : BERRINGTON HALL/ CROFT CASTLE

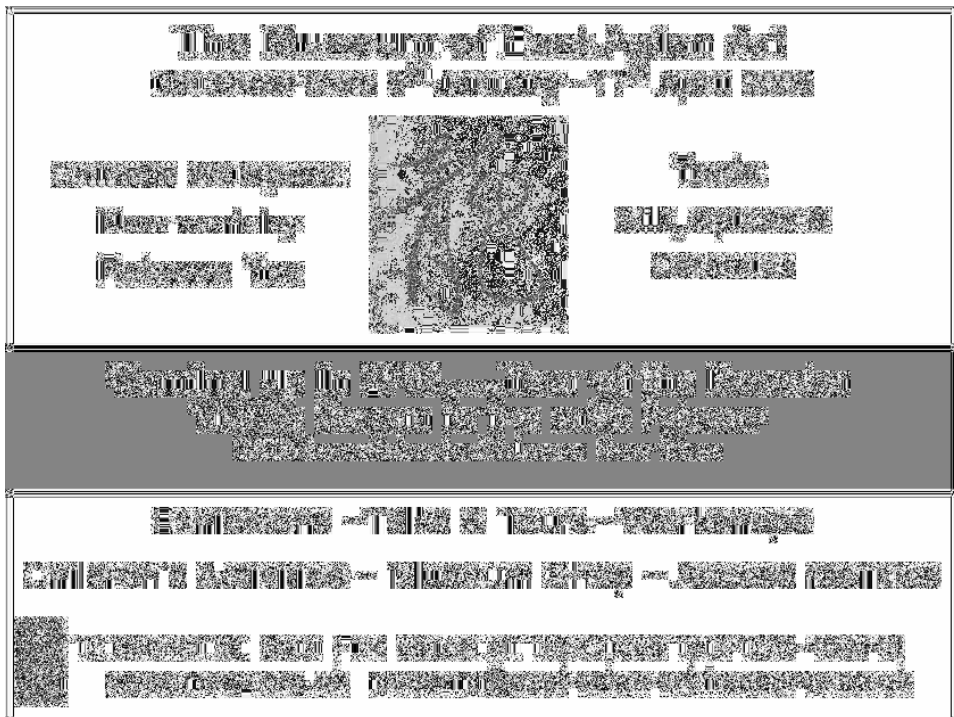
Depart 9.00am return approx 7.00pm. Berrington Hall NT a Palladian style house with lavish interiors is set above a beautiful valley (licensed restaurant); nearby is Croft Castle NT a Georgian Gothic building with walls and corner towers dating from 14thC.

5. TYNTESFIELD : The house will be included in this year's programme for members who have not yet visited the property. It is NT but a charge is made.

6. MONDAY 10 OCT 2005: SPENCER HOUSE / TATE BRITAIN
Depart 8.30am retn approx 7.00pm. A visit to this magnificently restored Spencer House overlooking Green Park and then visiting Tate Britain in Westminster for their October exhibition details of which are not yet available. (It was not possible to make a group visit to these places on a Sunday).

Further information from:-

Peta Hall, Bath Preservation Trust, 1 Royal Crescent, Bath BA1 2LR



CRESCENT FLOWER SHOP



*May we help you
enjoy a
stress-free
Christmas
by supplying all
your
festive decorative
needs*

DOOR WREATHS ● SWAGS
● DINING TABLE ARRANGEMENTS ●
HOLLY BUNCHES ● FIREPLACE GARLANDS ●
BEAUTIFUL CHINA BOWLS PLANTED WITH BULBS
● HOSTESS HAND-TIED POSIES ●
AND MANY MORE IDEAS

Crescent Lane, Julian Road, Bath BA1 2PX.
Telephone and Facsimile (01225) 312999

